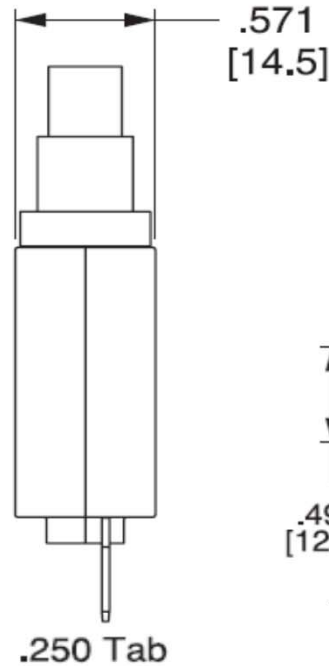
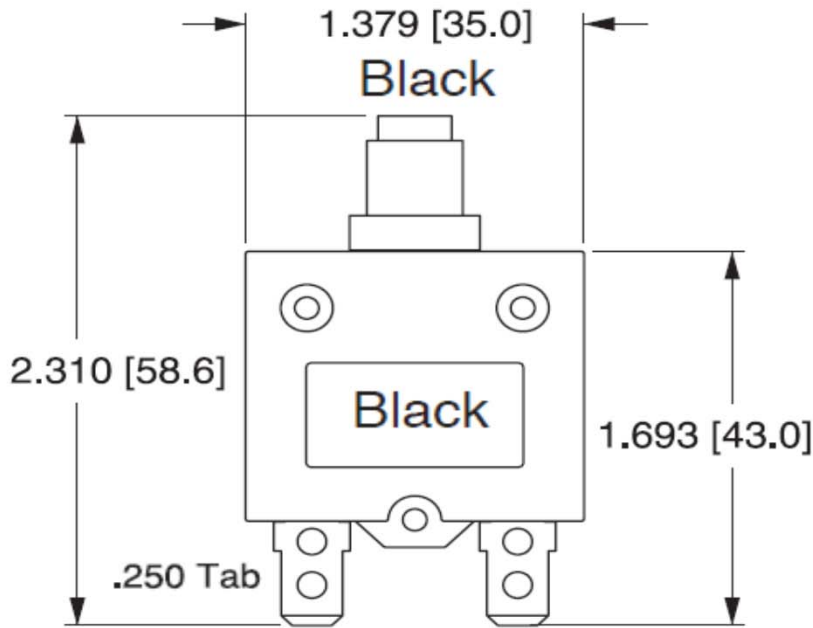


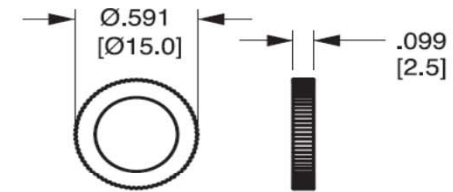
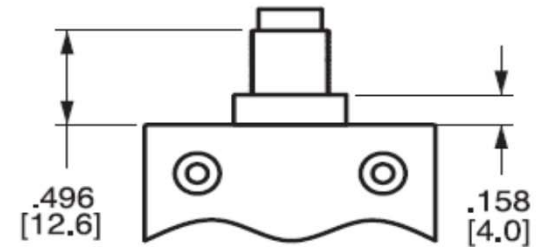
Single Pole Pushbutton Thermal Circuit Breaker

35-2103

ROHS Compliant



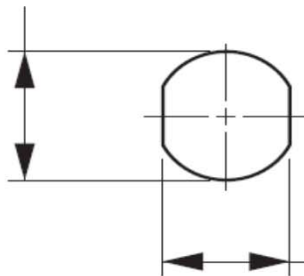
3 Amps
125-250VAC, 32VDC



M11 mounting hole

Terminals are .0315 [.8] thickness for ratings < 35 Amps

$\begin{matrix} +.008 & +.20 \\ -.000 & -.00 \end{matrix}$
.441 [11.2]



$\begin{matrix} +.008 & +.20 \\ -.000 & -.00 \end{matrix}$
.394 [10.0]

Dielectric Strength:

2500 VAC/1 minute

Interrupting capacity:

2500 amps @ 32 VDC

Insulation Resistance:

100M ohms

Operating Temperature:

-10°C to 60°C

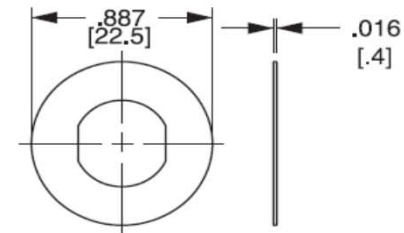
Voltage drop:

< 0.25 V

Indicator Plate

Silver Printing on Black

“Suppl. Prot. press to reset”.



CLB-033-11A1B-B-A